

D22FA

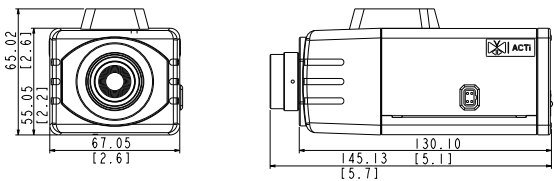
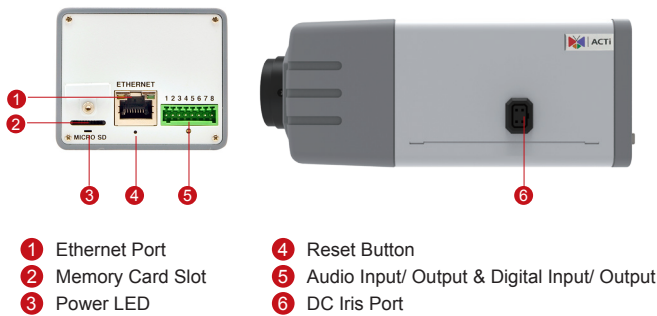
5MP Box with D/N, Fixed Lens



- 5 Megapixel with 1080p
- Day & Night
- Fixed Lens with f2.93mm / F2.0
- 30 fps at 1920 x 1080

PHOTO INDICATION

DIMENSION DIAGRAM



Unit: mm [inch]

ACCESSORY OPTIONS

| Lens | | |
|-----------|--|---|
| PLEN-0101 | | IR Compatible, Fixed Iris, F1.8, f4.2mm, 64.7° |
| PLEN-0127 | | IR Compatible, DC Iris, F1.4, 2.8-12mm, 70.9° - 27.7° |
| PLEN-0205 | | IR Compatible, DC Iris, F1.6, 8-80mm, 33.5° - 3.7° |

| Outdoor Housing & Bracket | | |
|---------------------------|--|--|
| PMAX-0200 | | IP66, with heater and fan powered by 110V AC, -30°C ~ 50°C (-22°F ~ 122°F), requires housing bracket |
| PMAX-0201 | | IP66, with heater and fan powered by 220V AC, -30°C ~ 50°C (-22°F ~ 122°F), requires housing bracket |
| PMAX-0202 | | IP66, -10°C ~ 50°C (14°F ~ 122°F), requires housing bracket |
| PMAX-1101 | | Aluminum, max. load 10 kg (22.05 lb), tilt angle 90° (For PMAX-0200, PMAX-0201, PMAX-0202) |

| Popular Mounting Solutions | | |
|----------------------------|-------------------------------------|--|
| Corner | PMAX-0202 PMAX-1101 PMAX-0402 | |
| Pole | PMAX-0202 PMAX-1101 PMAX-0503 | |

| Camera Bracket | | |
|----------------|--|---|
| PMAX-1100 | | Ceiling bracket for indoor box or bullet cameras, ivory |
| PMAX-1104 | | Ceiling bracket for indoor box or bullet cameras, gray |

* For more mounting solutions, please refer to Project Planner on www.acti.com

PRODUCT SPECIFICATION**D22FA****• Device**

| | |
|--------------------------------|---|
| Device Type | Box Camera |
| Image Sensor | Progressive Scan CMOS |
| Sensor Size | 1/3.2" |
| Day / Night | Yes |
| Superior Low Light Sensitivity | No |
| Minimum Illumination | Color: 0.1 lux at F2.0 (30 IRE, 2400°K); B/W: 0.05 lux at F2.0 (30 IRE, 2400°K) |
| Color to B/W Switch | ISP based switch; Configurable |
| Mechanical IR Cut Filter | Yes |
| IR Sensitivity Range | 700 - 1100 nm |
| IR LED | No |
| Electronic Shutter | 1/5 ~ 1/2,000 sec (manual mode); 1/5 ~ 1/10,000 sec (auto mode) |

• Lens

| | |
|--------------------------|---------------------------------|
| Focal Length / Aperture | Fixed focal, f2.93 mm/ F2.0 |
| Iris | Fixed iris |
| Focus | Manual focus |
| Lens Mount | CS mount (interchangeable lens) |
| Horizontal Viewing Angle | 81.6° |

• Video

| | |
|--------------------------------|---|
| Compression | H.264 HP, MJPEG |
| Max. Frame Rate vs. Resolution | 15fps at 2592x1944; 15 fps at 2048x1536; 30 fps at 1920 x 1080; 30 fps at 1280 x 720; 30 fps at 640 x 480; 15 fps 320 x 240 |
| Multi-Streaming | Simultaneous dual streams based on two configurations |
| Bit Rate | 28 Kbps - 6 Mbps (per stream) |
| Bit Rate Mode | Constant, Variable |
| Image Enhancement | White balance: automatic, hold, and manual; Brightness; Contrast; Sharpness (auto); Auto gain control; Digital noise reduction; Flickerless |
| Privacy Mask | 4 configurable regions |
| Text Overlay | User defined text on video |
| Image Orientation | Image flip and mirror |

• Audio

| | |
|-------------|---|
| Compression | 8kHz, Mono, PCM, 16 bit encoding; G.711 |
| Audio-In | Terminal block |
| Audio-Out | Terminal block |

• Network

| | |
|--------------------|---|
| Protocol & Service | TCP, UDP, HTTP, HTTPS, DHCP, PPPoE, RTP, RTSP, IPv6, DNS, DDNS, NTP, ICMP, ARP, IGMP, SMTP, FTP, UPnP, SNMP, Bonjour |
| Ethernet Port | 1, Ethernet (10/100 Base-T), RJ-45 connector |
| Security | IP address filtering; HTTPS encryption; Password protected user levels; IEEE 802.1X network access control; Anonymous login |

• Alarm

| | |
|----------------|--|
| Alarm Trigger | Video motion detection (3 regions); External device through digital input |
| Alarm Response | Notify control center; Change camera settings; Command other devices; E-mail notification with snapshots; Save video or snapshot to local storage; Upload video, Snapshot to FTP server, Activate external device through digital output |

• Interface

| | |
|-------------------|--|
| DC Iris Connector | External connector for DC iris lens |
| Digital Input | 1, Terminal block |
| Digital Output | 1, Terminal block |
| Local Storage | MicroSDHC/MicroSDXC memory card slot (card not included) |

• General

| | |
|----------------------------|---|
| Power Source / Consumption | PoE Class 2 (IEEE802.3af) / 4.32W |
| Weight | 433 g (0.95 lb) |
| Dimensions (W x H x D) | 67mm x 65mm x 143mm (2.6" x 2.6" x 5.6") |
| Environmental Casing | Optional housing (IP 66 rated) |
| Starting Temperature | -10°C ~ 50°C (14°F ~ 122°F) |
| Operating Temperature | -10°C ~ 50°C (14°F ~ 122°F) |
| Operating Humidity | 10% ~ 85% RH |
| Approvals | CE (EN 55022 Class B, EN 55024), FCC (Part15 Subpart B Class B) |

• Integration

| | |
|-------------------------|--|
| Unified Solution | Fully compatible with ACTi software |
| ISV Integration | Software Development Kit (SDK) available, ONVIF compliant |
| Firmware Access Browser | Microsoft Internet Explorer 8.0 or newer (full functionality); Safari with QuickTime installed, and other browsers with QuickTime installed (partial functionality) |